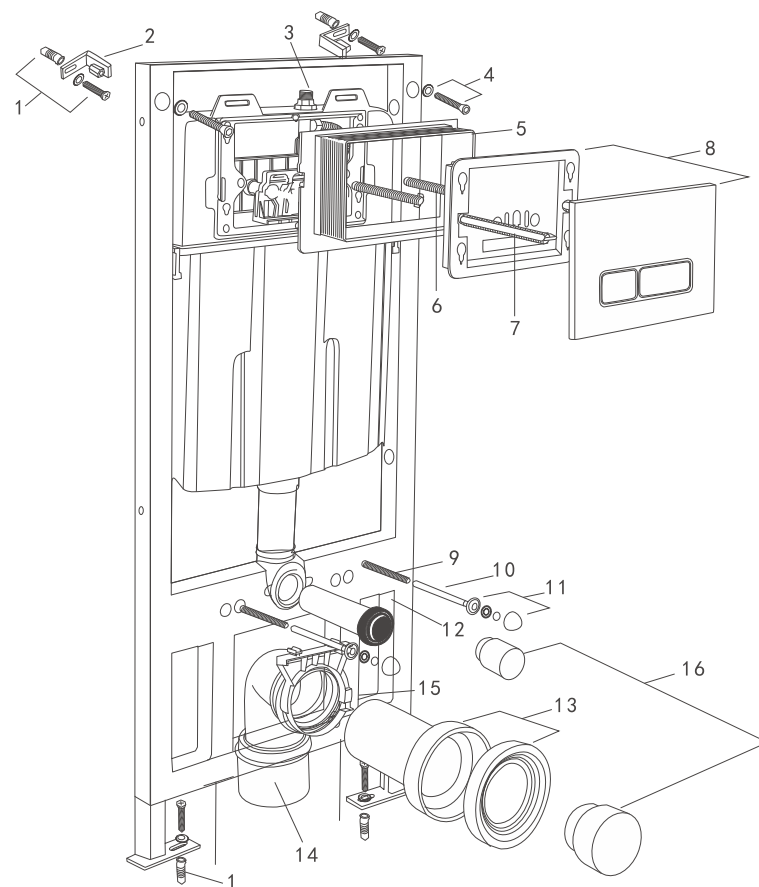


CONCEALED FLUSH CISTERN

INSTALLATION MANUAL

SPACE SAVING CONCEALED FLUSH CISTERN

TO BREAK THROUGH SPACE LIMITS,
TO CREATE MORE BEAUTY.



07 Main Accessories List

No .	Name	Quantity	Usage
1	8mm Mounting Screws Suite	4	To Fix the Wall & the Iron Frame
2	Iron Frame Fixing Bracket Suite	2	To Fix the Iron Frame & the Iron Frame Brackets
3	Filtering Valve	1	Water inlet Valve for Water Switch
4	Iron Frame Fixing Screws Suite	2	To Fix the Iron Frame
5	Panel Adjusting Box	1	To Reserve Space for Panel Installation When Walling
6	Panel Levers	2	To Adjust Flushing Button
7	Adjusting Rods	2	To Fix Flush Cistern with the Panel
8	Panel Lid	1	Button Panel of the Flush Cistern
9	Wall-hung Toilet Fixing Rods	2	To Fix the Wall-hung Toilet
10	Wall-hung Toilet Fixing Rod Rubber Sleeves	2	To Protect the Wall-hung Toilet Fixing Rod when Walling
11	Wall-hung Toilet Fixing Accessories Suite	2	To Fix the Wall-hung Toilet
12	Wall-hung Toilet Water-inlet Tube	1	To Connect the toilet with the Flush Cistern (Shall Be Cut according to the Thickness of the Wall)
13	Wall-hung Toilet Water-out Tube	1	To Reserve Space for Connecting the Wall-hung Toilet-outlet Tube with the Waste-draining Tube (Shall Be Cut according to the Thickness of the Wall)
14	Wall-hung Toilet Bend Waste-draining Bend Tube	1	To Connect With the Draining Pipe
15	Clamp	1	To Fix the Waste-draining Bend Tube
16	Blank Caps For Water-inlet & Water-outlet Tubes	1	To Prevent Dust or other Foreign Materials Entering the Flush Cistern

A WALL-HUNG TOILET

Installation Method: Wall-mounting

CONCEALED FLUSH CISTERN INSTALLATION MANUAL

I. PREPARATION BEFORE INSTALLATION

IMPORTANT NOTIFICATION:

- (1) Please read the manual carefully before installation. Our company will be irresponsible for loss caused by installation personnel's execution without following the instructions.
- (2) The installation position shall be confirmed before the installation of the iron frame. The floor height shall be confirmed according to the overall planning of interior decoration after finishing decoration. The FFL line shall be drawn on the installation wall and use it as the datum line of Zero height from beginning to end.
- (3) All of the contents are edited on the basis of latest materials at the time of publishing. The company reserves the right to change the features, packaging or offering of the products at any time without notice.

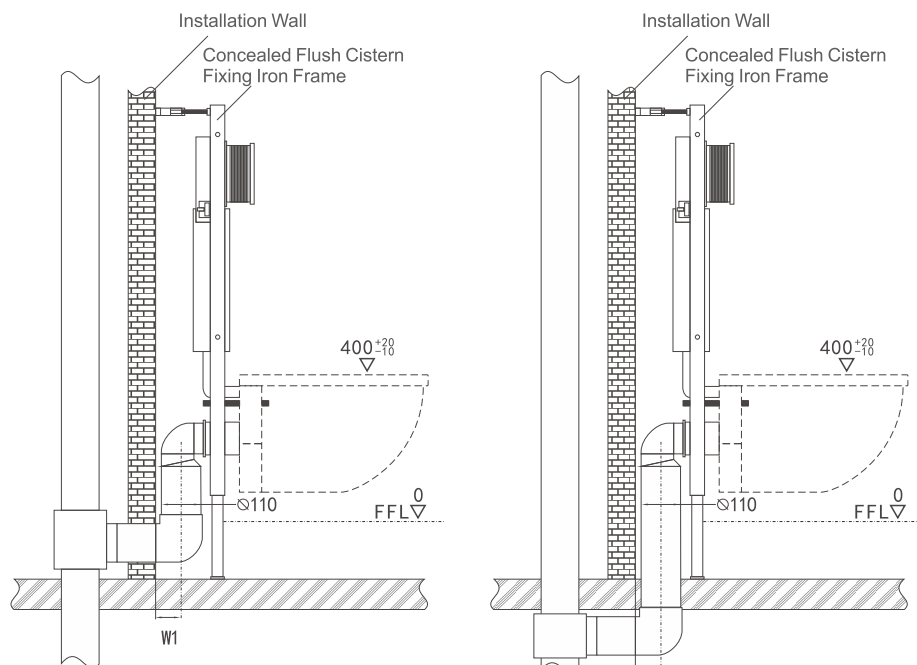
MATTERS NEEDING ATTENTION:

- (1) Please use this product before tiling;
- (2) All dimensions in millimetres (mm);
- (3) If the parts shown in the picture do not match the real ones, the real ones shall prevail;

! FFL ∇ = line refers to the floor surface after finishing installation

1. Draining Pipe Laying:

The way to install drain pipe shall be confirmed according to the position of the drain outlet. If the drain outlet is not either way of the explanatory charts, please lay the drain pipe as one of the ways in the explanatory charts to match the output way of the waste-draining tube of this product.

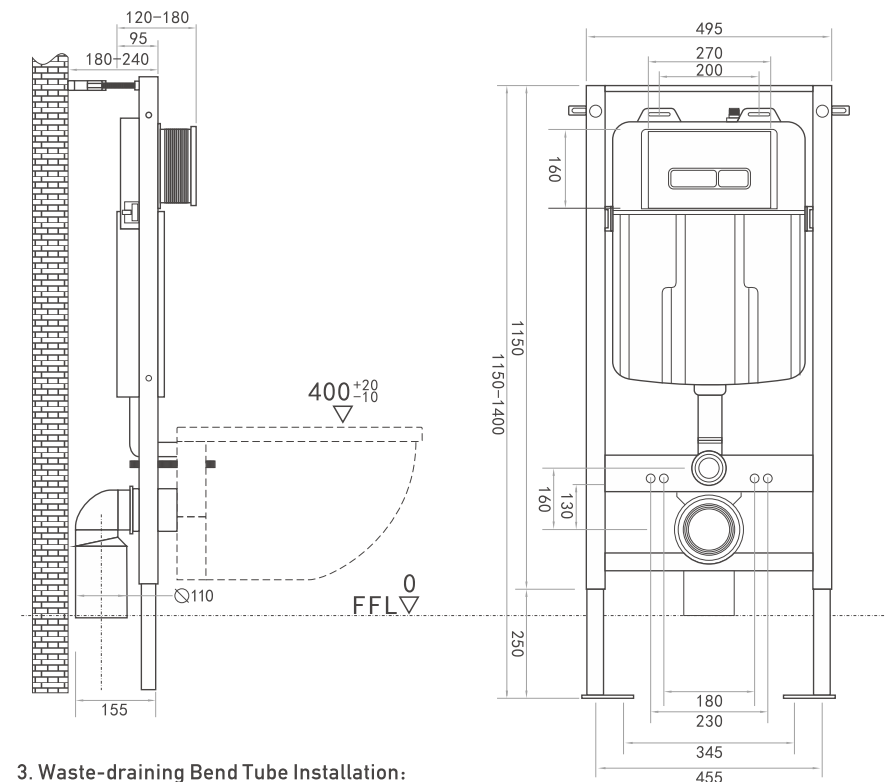


The Distance from the center of waste-draining tube to the installation wall (W1) is 70-80

The Distance from the center of waste-draining tube to the installation wall (W1) is 70-80

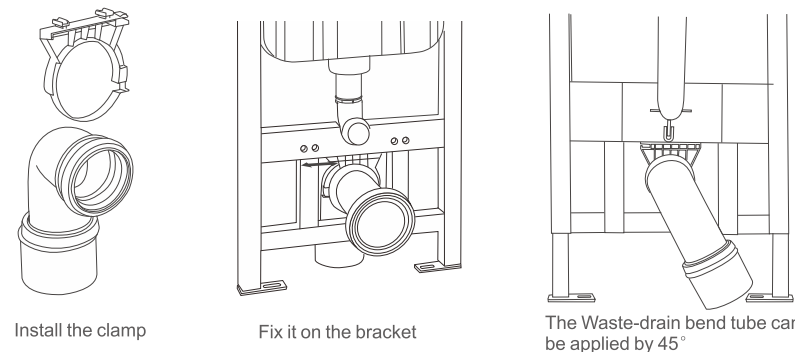
2. Basic Dimension & Water Supply Pipe Laying:

Please reserve space according to the selected product when laying water supply pipe lines. The water supply pipe shall be connected with the flush cistern's regulating valve.



3. Waste-draining Bend Tube Installation:

Please connect the waste-draining tube with the reserved drain outlet. The angle of the draining pipe shall not be more than 45°. Otherwise, flushing function will be effected.



Install the clamp

Fix it on the bracket

The Waste-drain bend tube can be applied by 45°

A WALL-HUNG TOILET

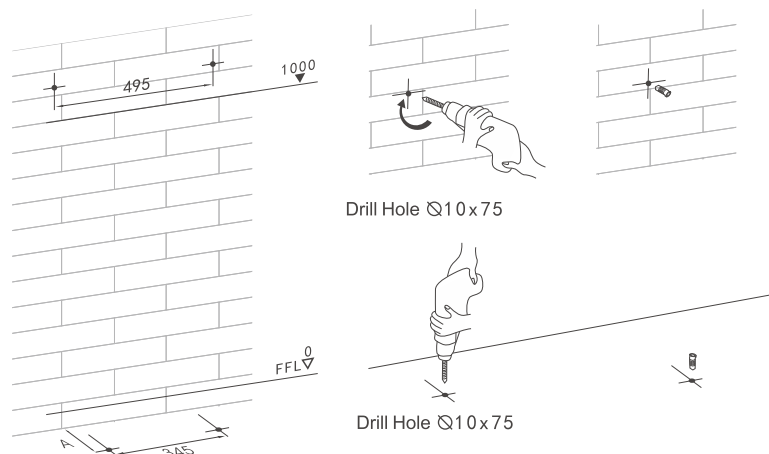
Installation Method: Wall-mounting

CONCEALED FLUSH CISTERN INSTALLATION MANUAL

II. INSTALLATION STEPS:

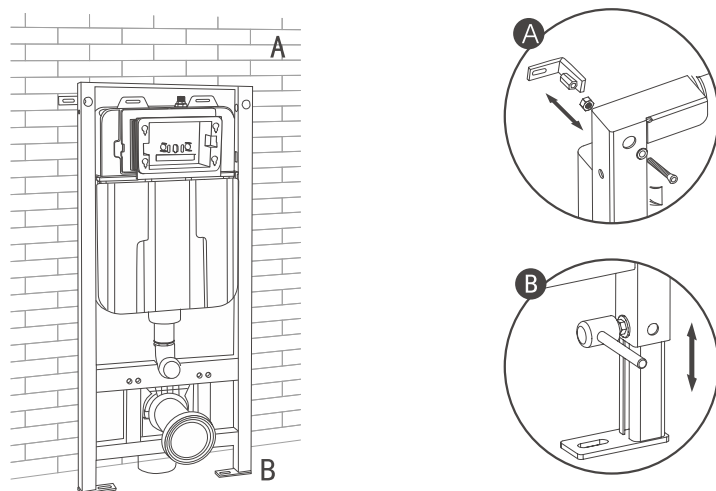
1.Bracket Installation

(1) Drill corresponding holes on the installation wall and the floor and insert the plugs in the holes.

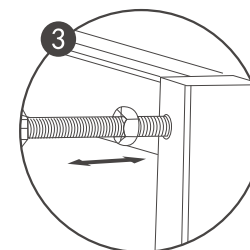
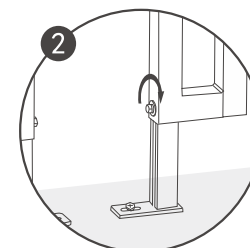
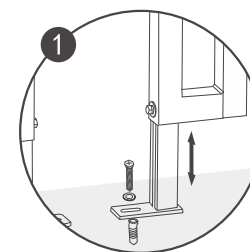
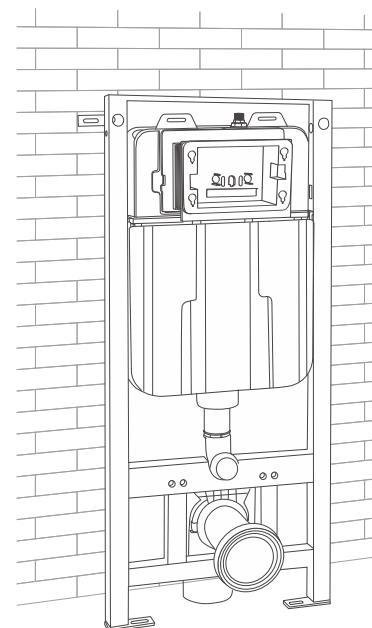


The data of A shall be determined according to the actual position of draining outlet;The distance of hole drilling is a theoretical data based on iron frame. Please determine according to the actual installing position of the the iron frame when actual installation.Please drill the holes after confirming hole drilling position and insert the plugs.

(2)After assembling the bottom support part of the frame, and adjusting the height of two sides of the brackets to the floor according to the dimension on the figure, lock the screws on Position A and Position B.



(3)After adjusting the frame to vertical and horizontal,make it fixed;



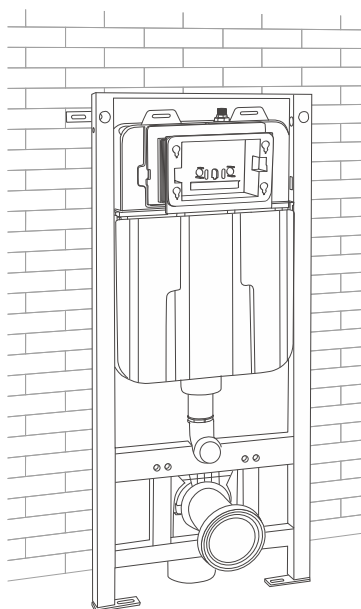
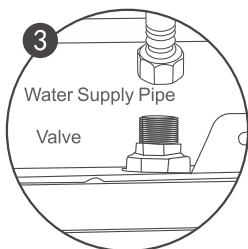
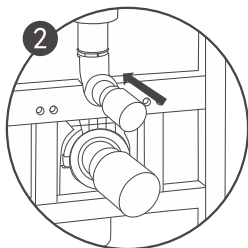
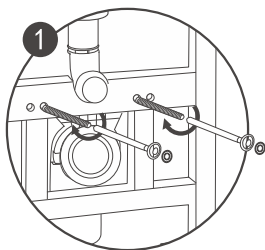
- ①Shown as Figure 1, adjust the height of the support to make the iron frame horizontal.
- ②Shown as Figure 2, after adjusting the horizon, tighten the screws on the support parts.
- ③Shown as Figure 3, after adjusting the distance of the screws to make the iron frame vertical to the floor, tighten the nuts.

A WALL-HUNG TOILET

Installation Method: Wall-mounting

CONCEALED FLUSH CISTERN INSTALLATION MANUAL

2. Installation on Inserts

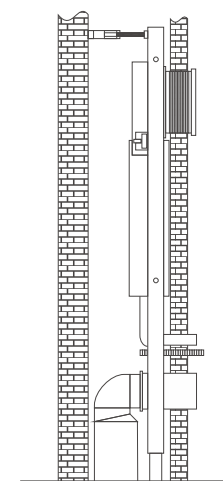
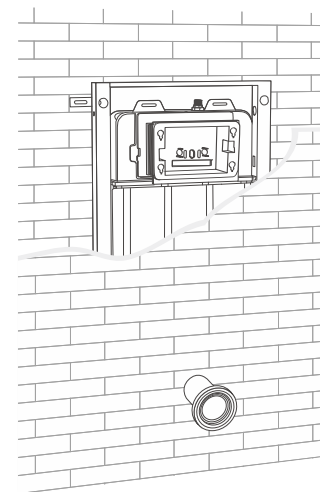


(1) Shown as Figure 1, choose the threaded holes according to the distance between the 2 installation holes on the back of the wall-hung toilet, insert the screw rods by rotating (The exposed length of the screw rods is the thickness of wall and tile plus 5.5-7cm.), place the washer, and tighten the screw rods by nuts.

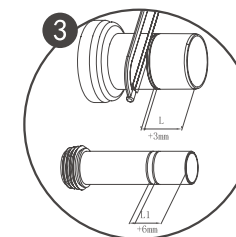
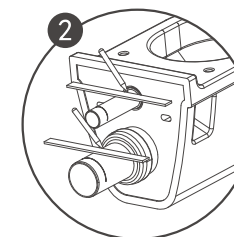
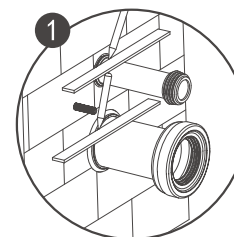
(2) Shown as Figure 2, cover the wall-hung toilet water-inlet tube and wall-hung toilet water-outlet tube with blank caps to prevent dust or other foreign materials entering the tubes.

(3) Shown as Figure 3, connect water supply pipe with the valve on the top of cistern.

3. Walling & Toilet Installation



The thickness of decoration wall ranges from 20-60cm (from the exterior of iron frame to the tiling finished surface)



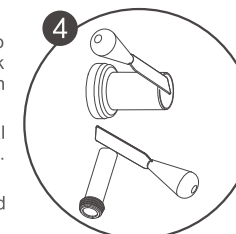
Take out the blank caps after finishing tiling.

(1) Shown as Figure 1, insert the wall-hung toilet water-outlet tube into the waste-drain bend tube, snap a ruler to the wall, use a pen to mark down the place where the tube is vertical to the wall. (same method on wall-hung toilet water inlet tube)

(2) Shown as Figure 2, mark down the place where the tube is vertical to the wall-hung toilet, take out the wall-hung toilet water-outlet tube. (same method on wall-hung toilet water inlet tube)

(3) Shown as Figure 3, calculate the length between two marks and saw the same length counted from the end part of the tubes.

(4) Shown as Figure 4, rasp the water inlet and water outlet at the orifice till a chamfer is formed.

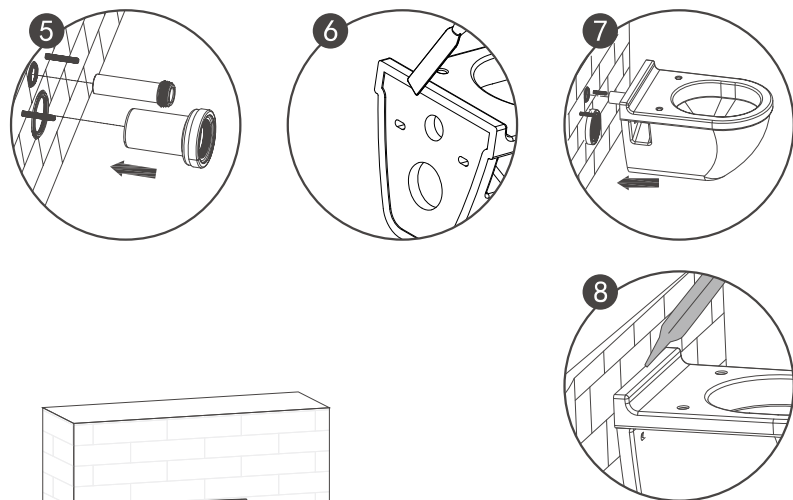


A WALL-HUNG TOILET

Installation Method: Wall-mounting

CONCEALED FLUSH CISTERN INSTALLATION MANUAL

4. Button Panel Installation

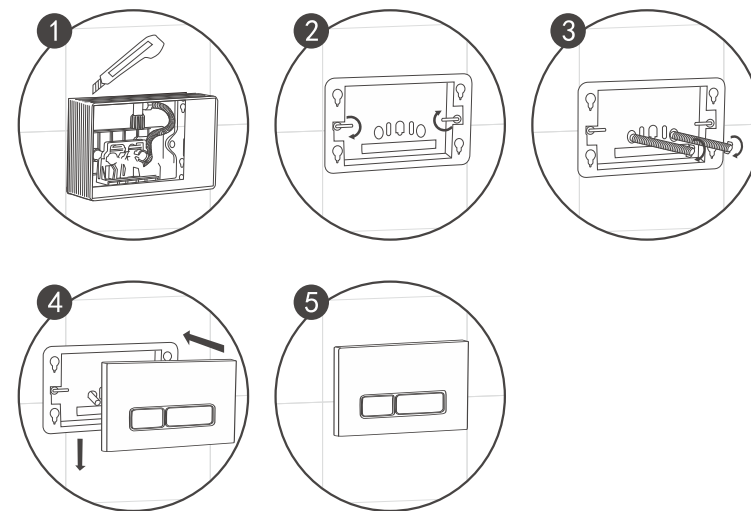


(5) Shown as Figure 5, insert the wall-hung toilet water-outlet tube into waste-drain bend tube and insert the wall-hung toilet water-inlet tube into the water-outlet bend tube of flush cistern.

(6) Shown as Figure 6, clean the back part of wall-hung toilet.

(7) Shown as Figure 7, aim at the screw rods, water-outlet tube and water-inlet tube, insert the wall-hung toilet. In sequence place backing ring, washer, and tighten the screw rods by nuts, tighten with conical cap.

(8) Shown as Figure 8, fill in the gap between wall and wall-hung toilet with glass glue or white cement.



(1) Shown as Figure 1, use a cutter to saw the part of the panel adjusting box, which is excessive from the wall.

(2) Shown as Figure 2, fix the dummy plate with the panel adjusting box, insert the adjusting rods as shown in the figure, tighten them clockwise.

(3) Shown as Figure 3, insert the panel levers as shown in the figure, tighten them clockwise.

(4) Shown as Figure 4, fix the panel with the dummy plate and haul it downwards.

(5) Button panel installation completed.

